



**Trusted Safety for a Secure Home!**

Petra Premium Steel Doors.

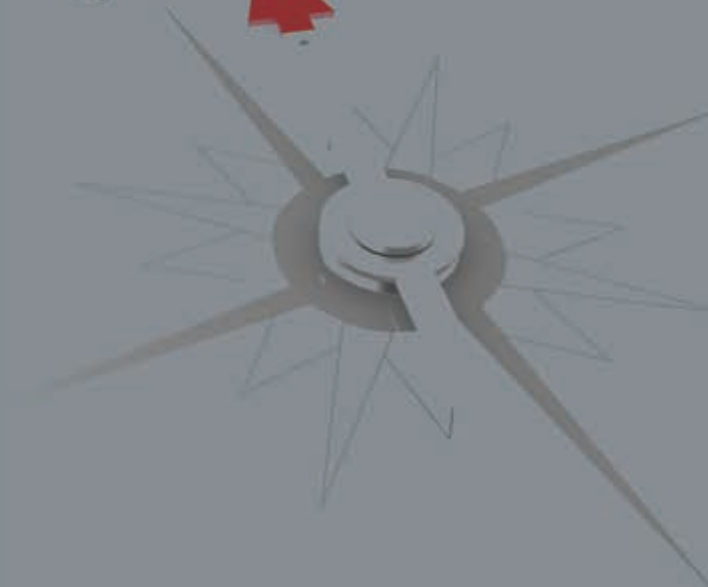
**VISION:**

Petra is committed to creating a greener, stronger future by leading with innovative, reliable steel door solutions—driven by customer satisfaction, quality consciousness, and a commitment to redefining sustainability.

**MISSION:**

To deliver strong, eco-friendly steel door solutions with modern design and lasting quality-building trust, ensuring satisfaction, and promoting sustainability through every service we provide.

VISION



## **PETRA - THE TRUSTED NAME IN STEEL DOORS!**

PETRA Premium Steel Doors, a fast-growing steel door manufacturer in India, specialises in crafting high-quality, durable, and stylish doors for residential and commercial spaces. With a wide range of customisable designs, including traditional, contemporary, and historical styles, our doors are designed to enhance elegance and security. Using ESL Technology (Extra Strength Long-Lasting Technology), PETRA steel doors feature multi-point locking, fire resistance, and anti-corrosion properties, catering to various functional and aesthetic needs. Every steel door comes with a durable frame, is easy to install, and long-lasting—helping save time, energy, and money.

With a production capacity of 5,000 doors per month and a dealer network of 300+ across South India, PETRA Steel Doors is committed to quality, customer satisfaction, and innovation. Our doors come with no extra cost for frames, locks, or accessories, ensuring convenience and ease of installation. Available in a variety of models and colors, PETRA Steel Doors offers the perfect solution for both luxury homes and commercial spaces.

**PETRA - THE STEEL DOOR SPECIALIST!**



"THE   
**STEEL  
DOOR  
SPECIALIST**"



**ISO 9001:2015**

All Petra Premium doors include a high-strength frame, locks, painting, and accessories at no extra cost. Honeycomb-core panels ensure sound proofing, while a stainless-steel multi-locking system delivers top security. Colour Guard finish resists scratches and fading, and doors are anti-corrosive, termite-proof, UV-protected, and fire-resistant. All these features make us your Steel Door Specialist!.

## Why Petra Steel Doors Are the Right Choice!



### Security

Steel doors provide excellent security, as they are strong and difficult to break through, offering peace of mind for home and building owners.



### Low Maintenance

Steel doors require minimal maintenance, as they are resistant to warping, rotting, and cracking, saving you time and effort.



### Design & Size Options

Petra Steel Doors come in various designs and sizes, allowing you to choose a style and size that complements your property's aesthetics.



### Easy Installation

Installation of Petra steel doors is relatively easy due to their well-designed structure and the accompanying installation instruction.



### Durability

Steel doors are highly durable and resistant to wear and tear, making them a long-lasting investment for your property.



### Multi-Point Locking System

This enhances the security by offering superior resistance to forced entry. It adds an extra layer of protection by securing the door at several points along its frame.



### Termite Proof

Petra Steel doors are termite-resistant, offering long-lasting protection—unlike wooden doors, which are prone to termite damage, warping, and deterioration.



### Galvanized Iron Doors

A key characteristic of our doors is that they are made from galvanized iron, which offers exceptional strength and resistance to corrosion.



### Fire Resistance

Steel doors have fire-resistant properties. Unlike wooden doors, steel doors cannot catch fire, providing an added layer of safety for your home or business.



### UV Protected

Our steel doors are UV-protected. This feature prevents fading, cracking, and warping over time, ensuring the door retains its aesthetic appeal and structural integrity.



### Weather Resistance

Steel doors are highly resistant to weather elements, including extreme heat, cold, and moisture, ensuring their longevity. They are also resistant to termite attacks.



### Eco-Friendly

Steel is a recyclable material, making steel doors an eco-friendly choice and a better alternative to wooden doors—helping conserve trees.



### Noise Reduction

Steel doors offer excellent soundproofing, helping to minimize external noise and create a quieter indoor environment.



### Better Aesthetic Appeal & Finish

Petra Steel Doors blend quality materials, modern design, and superior coatings offering the elegance of wood with the strength of steel.



**PTR 102**  
2050\*1500\*70MM 9" M/L MOBH

**PETRA PREMIUM STEEL DOORS!**

**Premium Quality Frame**

Durable, rust-free, with an aesthetic look and finish.

**Honeycomb Filling**

This hexagonal infill, made from craft paper, has unique properties that enhance structural strength while adding minimal weight.

**Galvanized Steel Sheets**

The steel used in the doors is galvanized, primed, and painted for triple protection. The sheets are durable and low-maintenance.

**Internal Support Elements**

Steel reinforcements are provided internally to ensure structural stability and integrity.

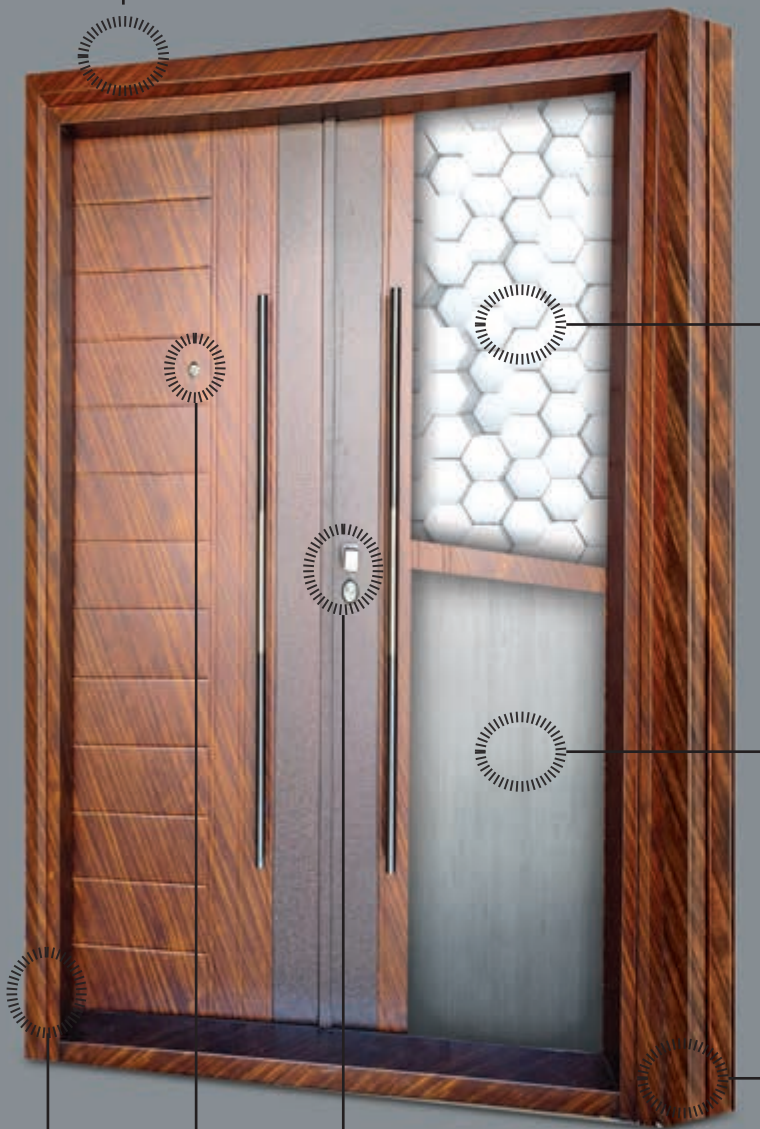
**Multi Point Locking System**

Equipped with a solid metal multi-locking system for enhanced security.

**Peep Hole**

**Hinges**

Premium-quality hinges made from stainless steel grade 304.





**PTR 66**  
2050\*1200\*90MM 9" M/L MS



**PTR 66**  
2050/2350\*1500\*90MM 9" M/L MOBH  
2050/2350\*1800\*90MM 9" M/L MOBH



**PTR 66**  
2050\*1200\*90MM 9" M/L MSSG



**PTR 66**  
2050\*1080\*90MM 9" M/L



**PTR 700**  
2050\*1200\*90MM 9" M/L MS



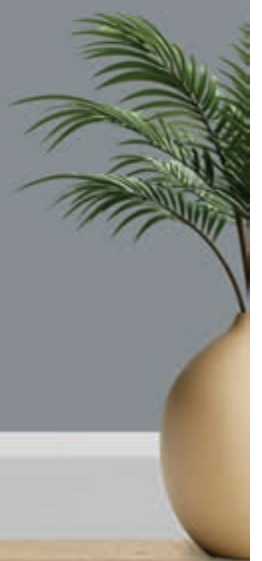
**PTR 700**  
2050\*1500\*90MM 9" M/L MOCH  
(Smart Lock)



**PTR 700**  
2050\*1080\*90MM 9" M/L



**PTR 700**  
2050\*1080\*90MM 9" M/L





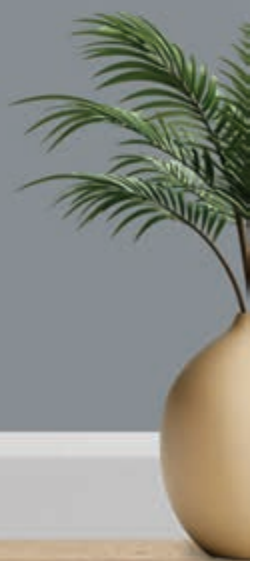
**PTR 125**  
2050\*1500\*90MM 9" M/L MOBH  
TEAK COLOUR



**PTR 125**  
2050\*1080\*90MM 9" M/L BH



**PTR 125**  
2050\*1200\*90MM 9" M/L MOBH





**PTR 637**

2050/2350\*1500\*90MM 9" M/L MOBH  
2050/2350\*1800\*90MM 9" M/L MOBH



**PTR 637**  
2050\*1800\*90MM 9" M/L MOCH



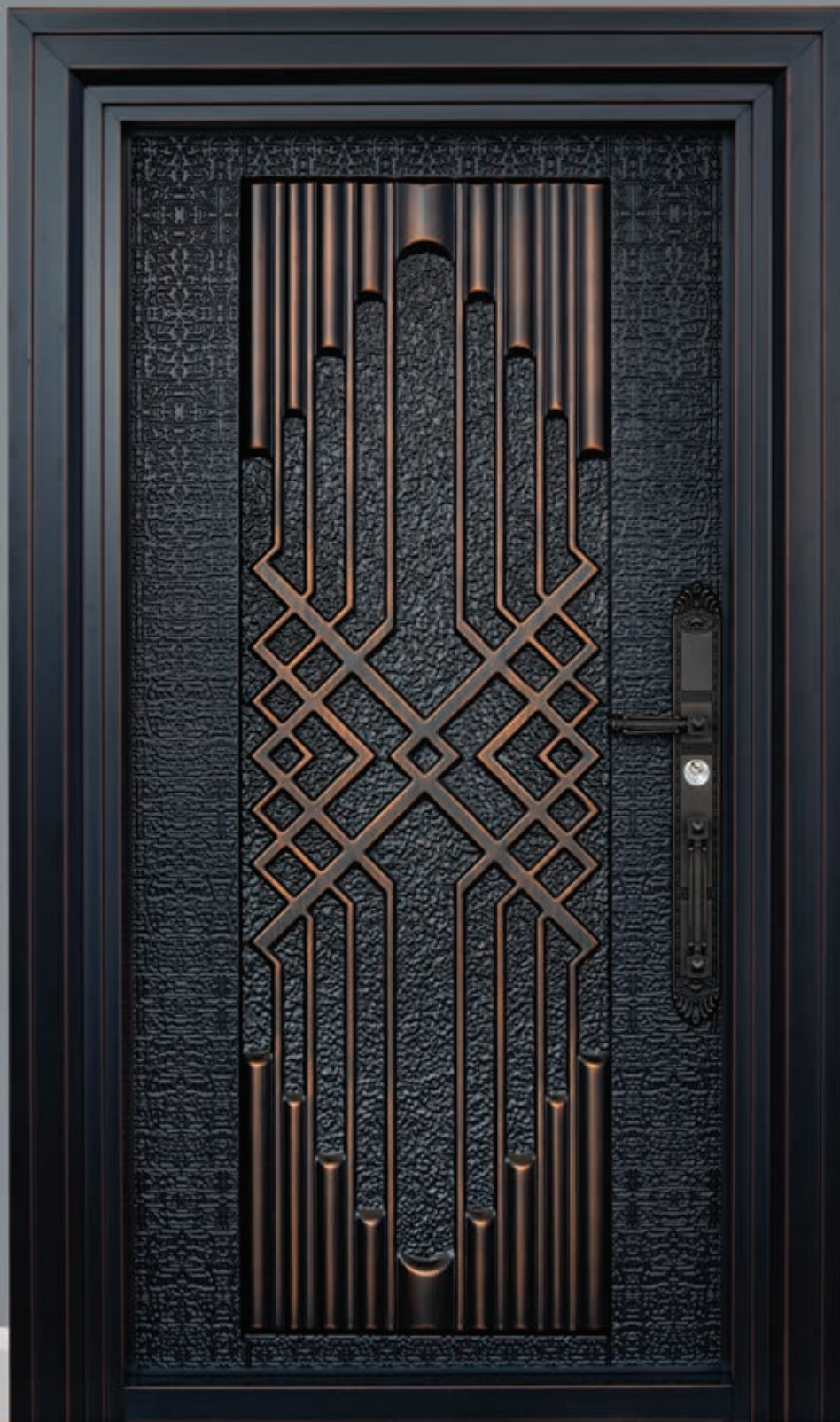
**PTR 637**  
2050\*1080\*90MM 9" M/L



**PTR 88**  
2050\*1500\*90MM 9" M/L MOBH



**PTR 88**  
2050\*1200\*90MM 9" M/L MS



**PTR 800**  
2050\*1080\*90MM 9" M/L



**PTR 800**  
2050\*1200\*90MM 9" M/L MS



**PTR 636**  
2050\*1200\*90MM 9" M/L MOBH  
2050/2350\*1500\*90MM 9" M/L MOBH



**PTR 11**  
2050\*1200\*90MM 9" M/L MS



**PTR 310**  
2050\*1080\*90MM 9" M/L



**PTR 759**

2050\*1200\*90MM 9" M/L MOCH  
2050\*1500\*90MM 9" M/L MOCH  
2350\*1500\*90MM 9" M/L MOCH



**PTR 311**  
2050\*1200\*90MM 9" M/L MO



**PTR 99**

2050\*1080\*70MM 9" M/L MOBH  
2050\*1200\*70MM 9" M/L MOBH





Trusted Safety for Premium Living!



**PTR 189**  
2050\*1500\*70MM 9" M/L MOBH



**PTR 189**  
2050\*880\*70MM 5" M/L, S/L



**PTR 189**  
2050\*980\*70MM 6" M/L



**PTR 189**  
2050\*1200\*70MM 6"/9" M/L MS



**PTR 189**  
2050\*1200\*70MM 9" M/L SGBH





**PTR 500**  
2050\*1500\*70MM 9" M/L MO, SGBH



**PTR 500**  
2050\*880\*70MM 5" M/L, S/L  
2050\*980\*70MM 6" M/L



**PTR 500**  
2050\*1080\*70MM 9" M/L FH



**PTR 500**  
2050\*1200\*70MM 9" M/L MSFH



**PTR 500**  
2050\*1200\*70MM 9" M/L MS, SGBH



**PTR 21**  
2050\*1500\*70MM 9" M/L MOBH



**PTR 21**  
2050\*880\*70MM 5" M/L, S/L  
2050\*980\*70MM 6" M/L



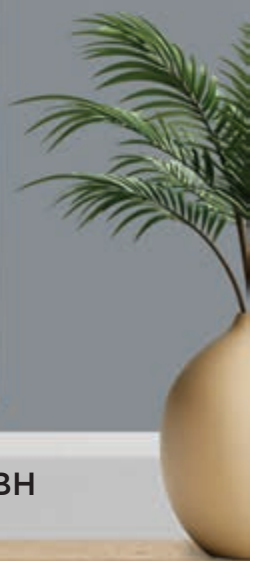
**PTR 21**  
2050\*1080\*70MM 6"/9" M/L



**PTR 21**  
2050\*1200\*70MM 9" M/L SGBH  
2050\*1500\*70MM 9" M/L SGBH



**PTR 21**  
2050\*1200\*70MM 9" M/L MSBH





**PTR 100**  
2050\*1500\*70MM 9" M/L MOBH



**PTR 100**  
2050\*880\*70MM 5" M/L, S/L  
2050\*980\*70MM 6" M/L  
2050\*1080\*70MM 6"/9" M/L



**PTR 100**  
2050\*1080\*70MM 9" M/L  
Twin Door  
2050\*1200\*70MM 9" M/L  
Twin Door



**PTR 100**  
2050\*1200\*70MM 6"/9" M/L MS



**PTR 100**  
2050\*1200\*70MM 9" M/L MSSG, BH  
2050\*1500\*70MM 9" M/L MSSG, BH



**PTR 20**

2050/2150\*1080\*70MM 9" M/L MOBH  
2050/2150\*1200\*70MM 9" M/L MOBH  
2050/2150\*1500\*70MM 9" M/L MOBH



**PTR 20**  
2050/2150\*880\*70MM 5" M/L, S/L  
2050/2150\*980\*70MM 6" M/L, S/L  
2050/2150\*1080\*70MM 6"/9" M/L



**PTR 20**  
2050\*1200\*70MM 6"/9" M/L MS



**PTR 20**  
2050\*1200\*70MM 9" M/L MSBH  
2150\*1200\*70MM 9" M/L MSBH



**PTR 20**  
2050/1080\*1200\*70MM 6"/9" M/L MOFH





**PTR 45**

2050/2350\*1500\*70MM 9" MOBH  
2050/2350\*1800\*70MM 9" MOBH



**PTR 45**

2050/2350\*880\*70MM 5" M/L, S/L  
2050/2350\*980\*70MM 6" M/L, S/L



**PTR 45**

2050/2350\*1080\*70MM 9" M/L BH



**PTR 45**

2050\*1200\*70MM 9" M/L MSBH



**PTR 45**

2050/2350\*1080\*70MM 6"/9" M/L  
2050/2350\*1200\*70MM 9" M/L MOBH



**PTR 45**

2050/2350\*1200\*70MM 6"/9" M/L





**PTR 75**  
2050/2350\*1500\*70MM 9" M/L MOBH



**PTR 75**

2050/2350\*880\*70MM 5" M/L, S/L  
2050/2350\*980\*70MM 6" M/L



**PTR 75**

2050/2350\*1080\*70MM 9" M/L BH



**PTR 75**

2050\*1200\*70MM 9" M/L MSFH



**PTR 75**

2050\*1500\*70MM 9" M/L MSBH  
2050\*1800\*70MM 9" M/L MSBH



**PTR 75**

2050/2350\*1080\*70MM 9" M/L MOBH  
2050/2350\*1200\*70MM 9" M/L MOBH





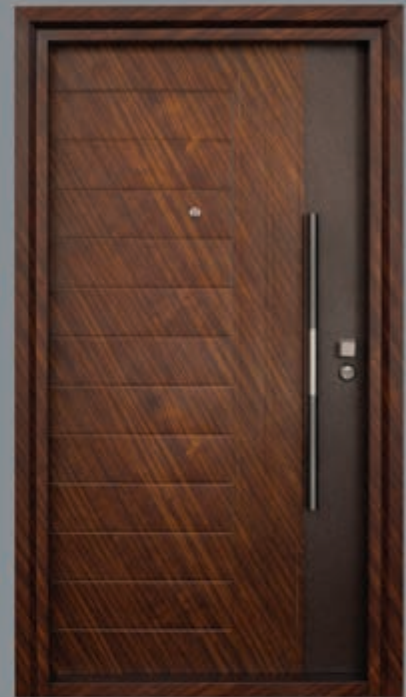
**PTR 102**  
2050\*1200\*70MM 9" M/L MSSG



**PTR 102**  
2350\*880\*70MM 5" M/L, S/L  
2050/2350\*980\*70MM 5" M/L, S/L  
2050\*1080\*70MM 6" M/L



**PTR 102**  
2050\*1080\*70MM 9" M/L FH



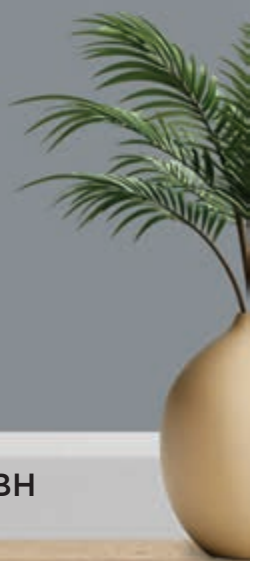
**PTR 102**  
2350\*1080\*70MM 9" M/L BH  
2050\*1080\*70MM 9" M/L BH

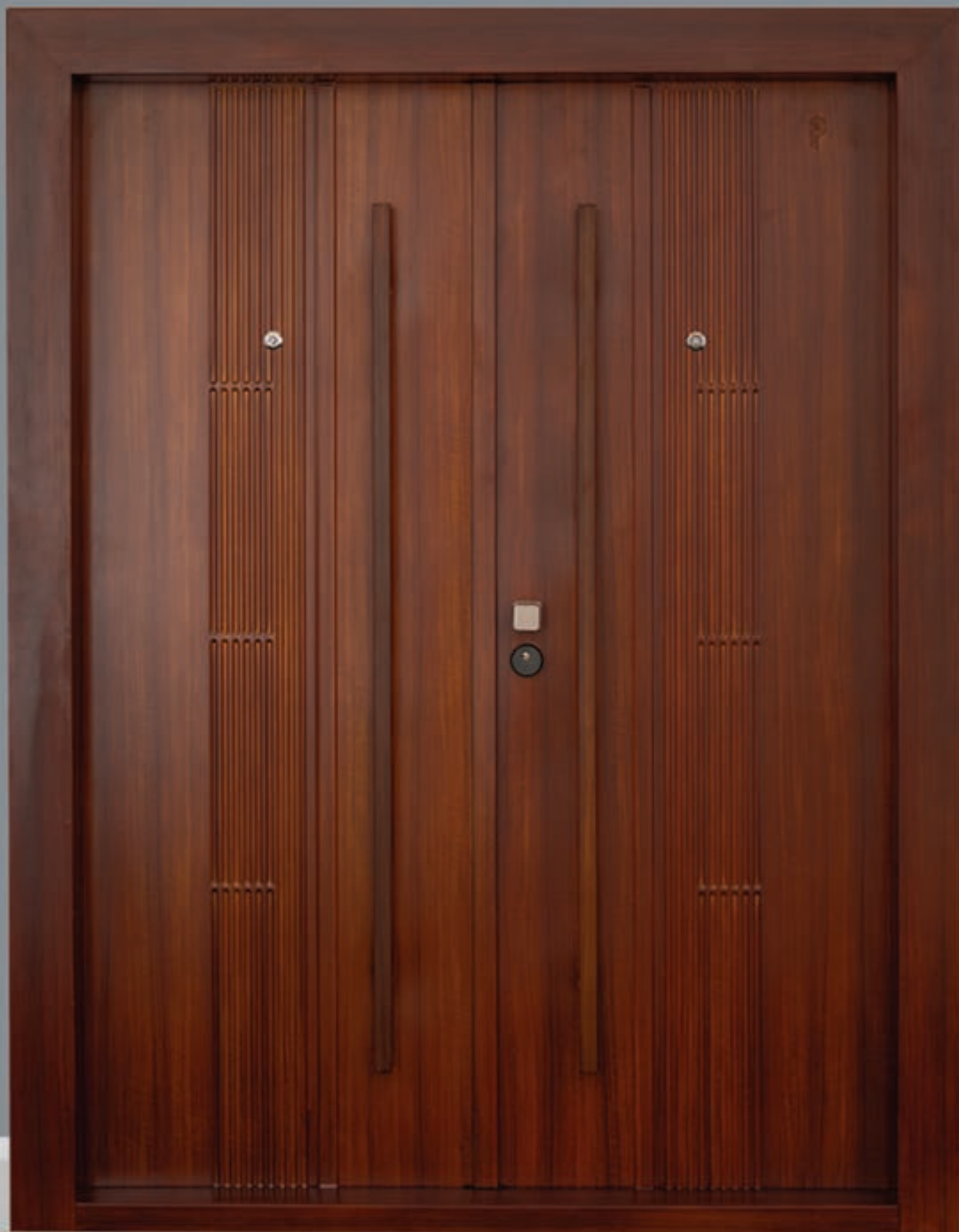


**PTR 102**  
2050\*1200\*70MM 9" M/L MSFH



**PTR 102**  
2050\*1200\*70MM 9" M/L MSBH  
2350\*1200\*70MM 9" MSBH





**PTR 55**

2050/2350\*1500\*70MM 9" M/L MOBH  
2050/2350\*1800\*70MM 9" M/L MOBH



**PTR 55**  
2050/2350\*880\*70MM 5" M/L, S/L  
2050/2350\*980\*70MM 6" M/L, S/L  
2050\*1080\*70MM 6"/9" M/L



**PTR 55**  
2050\*1200\*70MM 9" M/L MS, SGBH



**PTR 55**  
2050\*1200\*70MM 6"/9" M/L MS



**PTR 55**  
2050\*1200\*70MM 9" M/L MSBH  
2350\*1200\*70MM 9" M/L MSBH





**PTR 55**

2050\*1080\*70MM 9" M/L BH  
2350\*1080\*70MM 9" M/L BH



**PTR 55**  
2050\*1800\*70MM 9" M/L FOFH



**PTR 30**  
2050\*1500\*70MM 9" M/L MOBH



**PTR 30**  
2050\*880\*70MM 5" M/L, S/L  
2050\*980\*70MM 6" M/L  
2050\*1080\*70MM 6"/9" M/L



**PTR 30**  
2050\*1200\*70MM 6"/9" MS



**PTR 30**  
2050\*1200\*70MM 9" M/L SGBH  
2050\*1500\*70MM 9" M/L MS, SGBH



**PTR 131**  
2050\*1200\*70MM 9" M/L MSBH



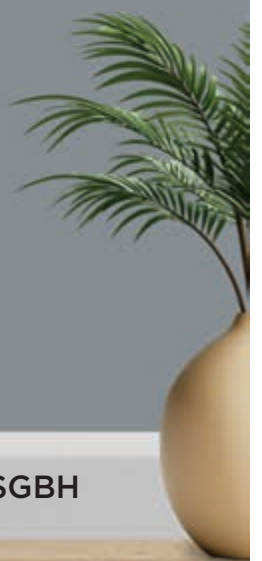
**PTR 131**  
2050\*880\*70MM 5" M/L, S/L  
2050\*980\*70MM 6" M/L



**PTR 131**  
2050\*1080\*70MM 9" M/L BH



**PTR 131**  
2050\*1200\*70MM 9" M/L MSSGBH





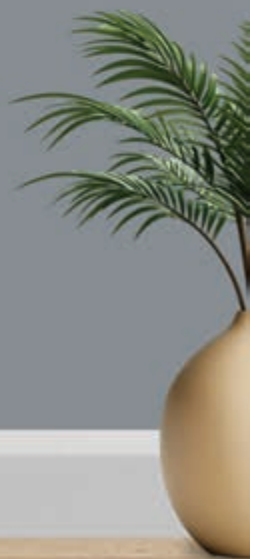
**PTR 115**  
2050\*1200\*70MM 9" M/L MSFH



**PTR 115**  
2050\*880\*70MM 5" M/L, S/L  
2050\*980\*70MM 6" M/L



**PTR 115**  
2050\*1080\*70MM 9" M/L FH





**PTR 110**  
2050\*1800\*70MM 9" M/L FOFH



**PTR 110**

2050\*880\*70MM 5" M/L, S/L  
2050\*980\*70MM 6" M/L, S/L  
2050\*1080\*70MM 6"/9" M/L



**PTR 110**

2050\*1200\*70MM 6"/9" M/L MSFH



**PTR 60**  
2050\*1200\*70MM 6/9" M/L MS



**PTR 60**  
2050\*880\*70MM 5" M/L, S/L  
2050\*980\*70MM 6" M/L  
2050\*1080\*70MM 6"/9" M/L



**PTR 60**  
2050\*1200\*70MM 6"/9" M/L MS



**PTR 101**  
2050\*1200\*70MM 9" M/L



**PTR 101**  
2050\*1080\*70MM 9" M/L



**PTR 220**  
2050\*1200\*70MM 9" M/L



**PTR 220**

2050\*880\*70MM 5" M/L, S/L

2050\*980\*70MM 6" M/L

2050\*1080\*70MM 6"/9" M/L



**PTR 202**  
2050\*1080\*70MM 9" M/L  
2050\*1200\*70MM 9" M/L MOBH



**PTR 202**  
2050\*880\*70MM 5" M/L, S/L  
2050\*980\*70MM 6" M/L



**PTR 201**  
2050\*880\*70MM 5" M/L



**PTR 201**  
2050\*980\*70MM 6" M/L



**PTR 400**  
2050\*1800\*70MM 5" M/L FOFH

## PETRA PREMIUM STEEL DOORS - SPECIFICATIONS

| Model              | Sl.No.        | Inner Measurement (W*H) | Outside Measurement (W*H) | Leaf     | Wall opening sizes required before plastering & flooring |
|--------------------|---------------|-------------------------|---------------------------|----------|--|
| Entrance Doors     | 1             | 880*2050                | 970*2100                  | 70MM     | 900*2100   |
|                    | 2             | 980*2050                | 1090*2100                 | 70MM     | 1000*2100  |
|                    | 3             | 1080*2050               | 1190*2100                 | 70MM     | 1100*2100  |
|                    | 4             | 1200*2050               | 1320*2100                 | 70MM     | 1230*2100  |
|                    | 5             | 1500*2050               | 1620*2100                 | 70MM     | 1530*2100  |
|                    | 6             | 1800*2050               | 1920*2100                 | 70MM     | 1830*2100  |
|                    | 1             | 880*2150                | 970*2200                  | 70MM     | 900*2200   |
|                    | 2             | 980*2150                | 1090*2200                 | 70MM     | 1000*2200  |
|                    | 3             | 1080*2150               | 1190*2200                 | 70MM     | 1100*2200  |
|                    | 4             | 1200*2150               | 1320*2200                 | 70MM     | 1230*2200  |
|                    | 5             | 1500*2150               | 1620*2200                 | 70MM     | 1530*2200  |
|                    | 1             | 880*2350                | 970*2400                  | 70MM     | 900*2400   |
|                    | 2             | 980*2350                | 1080*2400                 | 70MM     | 1000*2400  |
|                    | 3             | 1080*2350               | 1190*2400                 | 70MM     | 1100*2400  |
|                    | 4             | 1200*2350               | 1320*2400                 | 70MM     | 1230*2400  |
|                    | 5             | 1500*2350               | 1620*2400                 | 70MM     | 1530*2400  |
|                    | 6             | 1800*2350               | 1920*2400                 | 70MM     | 1830*2400  |
|                    | Bedroom Doors | 1                       | 880*2050                  | 970*2100 | 70MM   |
| 2                  |               | 980*2050                | 1080*2100                 | 70MM     | 1000*2100  |
| 1                  |               | 880*2150                | 970*2100                  | 70MM     | 900*2200   |
| 2                  |               | 980*2150                | 1080*2100                 | 70MM     | 1000*2200  |
| 1                  |               | 880*2350                | 970*2400                  | 70MM     | 900*2400   |
| 2                  |               | 980*2350                | 1080*2400                 | 70MM     | 1000*2400  |
| Luxury Doors       | 1             | 1080*2050               | 1260*2140                 | 90MM     | 1100*2100  |
|                    | 2             | 1200*2050               | 1380*2140                 | 90MM     | 1230*2100  |
|                    | 3             | 1500*2050               | 1680*2140                 | 90MM     | 1530*2100  |
|                    | 4             | 1800*2050               | 1980*2140                 | 90MM     | 1830*2100  |
|                    | 1             | 1080*2350               | 1260*2440                 | 90MM     | 1100*2400  |
|                    | 2             | 1200*2350               | 1380*2440                 | 90MM     | 1230*2400  |
|                    | 3             | 1500*2350               | 1680*2440                 | 90MM     | 1530*2400  |
|                    | 4             | 1800*2350               | 1980*2440                 | 90MM     | 1830*2400  |
| No-Architrave Door | 1             | 880*2050                | 880*2050                  | 70MM     | 900*2100   |
|                    | 2             | 980*2050                | 980*2050                  | 70MM     | 1000*2100  |
|                    | 3             | 1080*2050               | 1080*2050                 | 70MM     | 1100*2100  |
|                    | 4             | 1200*2050               | 1200*2050                 | 70MM     | 1230*2100  |
| Compact Doors      | 1             | 880*1950                | 970*2000                  | 70MM     | 900*2000   |
|                    | 2             | 980*1950                | 1080*2000                 | 70MM     | 1000*2000  |
|                    | 3             | 1080*1950               | 1190*2000                 | 70MM     | 1100*2000  |
|                    | 4             | 1200*1950               | 1320*2000                 | 70MM     | 1230*2000  |

## PETRA PREMIUM STEEL DOORS - SPECIFICATIONS

| FRAME                  |                         |
|------------------------|-------------------------|
| Material               | GI                      |
| Sheet Thickness        | 1.2, 1.5, 2 MM          |
| Profile size/Wall size | 125, 150, 225 MM        |
| Architrave Size        | 100, 110 MM             |
| Profile type           | Flat & Bend             |
| Paint                  | Powder coated with HTTP |

| SHUTTER             |                         |
|---------------------|-------------------------|
| Material            | GI                      |
| Door Leaf Thickness | 70, 90 MM               |
| Sheet Thickness     | 0.6, 0.8, 1 MM          |
| Infilled material   | Honey Comb paper        |
| Paint               | Powder coated with HTTP |

| ACCESSORIES |                                  |
|-------------|----------------------------------|
| Lock        | SS 304 Lock Plate                |
| Hinges      | SS 304                           |
| Handle      | SS 304, SS 202 with power coated |
| Cylinder    | Copper                           |
| Paint       | Powder coated with HTTP          |

| AVAILABLE COLOURS                       |
|---|
| Wooden Finish (Teak, Mahagony , Sal)    |
| Copper Finish                           |
| Plain Colours (Black, White, Grey etc.) |

## DOOR HINGES POSITION

RIGHT SIDE



Outside

LEFT SIDE



Outside

RIGHT SIDE REVERSE



Outside

LEFT SIDE REVERSE



Outside



- **Can a steel door be fixed into a wooden frame?**  
Steel doors are designed to be installed with their own specially engineered, long-lasting frames and accessories to ensure optimal performance and durability. This ensures a perfect fit, seamless integration, and long-term reliability.
- **Will lightning affect steel doors?**  
Steel doors are unlikely to be affected by lightning. In buildings with proper earthing, they generally do not pose a safety risk, as they are not typically a primary path for electrical current.
- **What is the right size of the wall opening to be kept to install Petra Steel Door?**  
The wall opening will depend on the chosen door size from among the sizes.
- **When should Petra steel doors be installed?**  
The decision to use Petra steel doors should be made during the initial planning stage, even though the actual installation takes place later—after wall plastering and flooring are completed.
- **How do I get the Petra Steel Door installed?**  
Petra Steel Doors are installed by a trained installation team. You can schedule the date and time of installation with your dealer at your convenience.
- **How long will it take for my door to get delivered?**  
Delivery time may vary depending on product availability and your location, and should be discussed with the dealer at the time of purchase.
- **How do I change the lock on my door?**  
The lock is fitted by our trained team during installation. If you wish to change it later, please contact your dealer or reach our customer care at 8590602629.
- **Can I repaint the Petra steel door?**  
Yes, repainting a Petra steel door is possible and can be an effective way to enhance its appearance. A fresh coat of paint can not only refresh the look of the door but also provide added protection against rust and weathering.

Choose Petra  
Steel doors for a  
greener globe!



Save Trees for a **Greener Earth** Tomorrow!

# PEOPLE'S ATTRACTION

Petra is the first and final choice of people



**EXPLORE THE RANGE OF PREMIUM STEEL DOORS!**



**PETRA STEEL DOORS LLP**

48/1816 , 1st Floor, Above Vivid Diagnostic Centre, Ernakulam Bypass,  
Chalikkavattom P.O, Vyttila, Kochi, Pin-682019, Kerala, India  
GSTIN : 32AAYFP8009J1ZQ Website: [www.petradoor.com](http://www.petradoor.com)  
Email: [info@petradoor.com](mailto:info@petradoor.com)



Instagram



Website

KERALA | TAMIL NADU | KARNATAKA | ANDHRA PRADESH | TELANGANA | MAHARASHTRA

